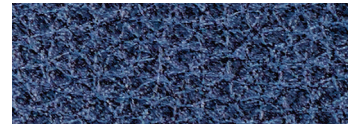




Standard Fabrics:



Lagoon



Umber

The Sinda polyurethane pattern is soft and supple and was designed to be breathable yet highly durable. It provides a realistic leather-like look with a subtle texture. The composite material and polyurethane resin coating make this fabric water resistant, flexible, and lightweight.

Crossover fabrics are unavailable.



**Rhea
PR442**



Comfort Zone™
by GOLDEN

Take a vacation from your busy day in The Rhea. It offers an overstuffed seam back design, plush chaise pad and an open arm design that holds numerous standard features that include two cup holders, two storage compartments, and a USB port. Positioning options are endless with our 4-Zone Comfort Zone™ Positioning System, which includes our patented MaxiComfort® Positioning, adjustable headrest and lumbar all operated by our programmable AutoDrive™ hand control. For extra wellness and comfort, our HeatWave™ Technology comes standard providing therapeutic warmth starting at your shoulders and continuing down to your feet. When you open the right arm, you will find a cup holder and a storage compartment that also holds the AutoDrive hand control. In the left arm, you will find an additional cup holder, a USB charging port, and a second storage compartment that holds the HeatWave hand control. As a bonus, you can use either cup holder without losing the comfort of the armrests thanks to the split design!

Standard Features:

- Patented MaxiComfort® Positioning
- Adjustable Headrest
- Adjustable Lumbar
- Programmable AutoDrive™ Hand Control
- HeatWave™ Technology
- USB Charging Port
- Built-in Cup Holders
- SmartTek® Diagnostic System
- Extra Pocket



DeLUNA Series PR442

Model Number	PR442-MED	PR442-LAR
Size	Medium	Large
Class II Medical Device	YES	YES
Weight Capacity	375 LBS	375 LBS
Positioning	MaxiComfort	MaxiComfort
Comfort Zone(s)	4	4
Twilight Technology	NO	NO
ZG+	NO	NO
Chaise Seat	YES	YES
Pocketed Coil Seat	YES	YES
Back Type	Seam	Seam
Removable Back Type	Quick Release	Quick Release
Head Rest Cover	NO	NO
Arm Rest Covers	NO	NO
Overall Width	37"	39"
Overall Height	45"	50"
Seat Width	22"	24"
Floor to Top of Seat	20"	21"
Seat Depth	21"	22"
Seat to Top of Back	29"	33"
Seat to Top of Arm	7"	8"
Distance Required from Wall Reclined	25"	30"
Extension Reclined from Back of Seat to End of Foot Rest	43"	44"
Life Time Warranty, Chair Frame, Lift Frame, Recline Mechanism	YES	YES
Warranty on Electrical Parts	3 YR	3 YR
Pro Rated Years 4 Thru 7	YES	YES
Warranty on Mechanical Labor	3 YR	3 YR
Warranty on Electrical Labor	1 YR	1 YR
Hand Control Routing	Right Arm Compartment	Right Arm Compartment
Extra Pocket Option	Standard	Standard
Heat & Vibrating Massage Option	NO	NO
HeatWave Technology	Standard	Standard
Articulating Headrest Option	Standard	Standard
Power Adjustable Lumbar Option	Standard	Standard
Foot Rest Extension Option	NO	NO
Straight Lift Option	Standard	Standard
USB Charging Port	Left Arm Compartment	Left Arm Compartment
Battery Backup	Lithium-Ion	Lithium-Ion
SmartTek Diagnostic System	Standard	Standard
Place of Origin	Imported	Imported

Designed and engineered in Old Forge, PA. Assembled in China using Golden components.



HEAT WAVE
TECHNOLOGY

STANDARD!

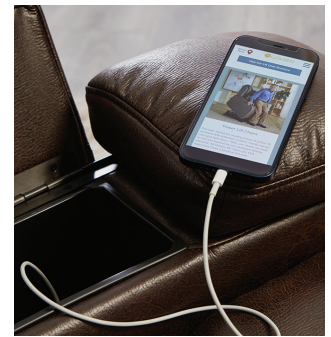
Far infrared heat penetrates skin and muscles to provide a soothing heat therapy experience. Adjustable Hi-Lo settings and timers let you control the comfort!



The Rhea comes standard with the following comfort and convenience features:



Right Arm: Cup Holder & Storage Compartment



Left Arm: USB Charging Port, Cup Holder, Power Port & Storage Compartment



Adjustable Headrest & Lumbar



HeatWave™ Technology



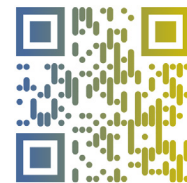
Comfort Zone™ by GOLDEN

Comfort Zones 1 - 4 provide an ergonomic comfort experience with an emphasis on head and back support. Each Comfort Zone can be adjusted independently by using the exclusive AutoDrive hand control.



Zone 1 LOWER BODY Zone 2 UPPER BODY Zone 3 HEADREST Zone 4 LUMBAR Zone 5 TWILIGHT TILT

WE PATENTED COMFORT™



Scan with your smartphone camera to learn more about Comfort Zone by Golden.



Phone: 800-624-6374
Fax: 800-628-5165
www.goldentech.com

Literature is current at time of printing. Golden Technologies reserves the right to make changes to the product or literature at any time.

Sizes may vary depending on fabric, filling material, upholstery and carpet thickness. All measurements taken on concrete floor using levels and metal rulers.



Complies with
UL 73 and
CSA C22.2 No. 68



www.facebook.com/goldentechnologies

SHT-PR442-100724