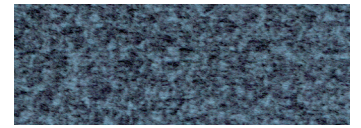


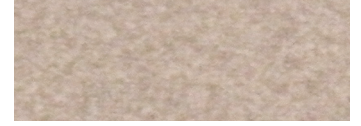


Shown in
Night Navy*

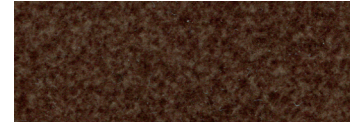
Standard Fabrics:



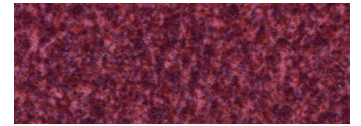
Calypso



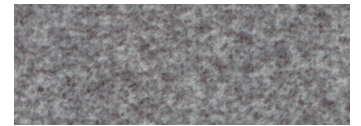
Camel



Hazelnut



Shiraz



Sterling

This fabric has a modern, updated look with rich color options.

* An upcharge will apply for all crossover fabrics. The Sinda pattern is unavailable on this model.

Cloud PR519



Comfort Zone[™]
by GOLDEN

Discover the ultimate in personalized comfort and convenience with a new version of the popular Cloud[™] by Golden. Building on our timeless design, this upgraded lift recliner features an ultra-plush, overstuffed biscuit-back and a uniquely contoured bucket seat designed to support natural alignment and encourage healthy posture. Enhanced front-load open arms add modern functionality and accessibility, featuring a wireless smartphone charger, drink holder, removable table, and removable LED reading light, keeping everything you need comfortably within reach. A USB A & C charging port on the side of the chair ensures your devices stay powered while you relax.

Positioning options are endless with our 5-Zone Comfort Zone[™] system, featuring our patented Twilight[™] Tilt Technology and MaxiComfort[®] Positioning. Together, they deliver endless ergonomic possibilities, from stress-relieving recline to a gentle, cradle-like tilt that helps reduce pressure points, improve circulation, and promote overall wellness. Adjustable headrest and lumbar support allow for personalized alignment.



FDA Class II Medical Devices designed by Golden Technologies are intended to assist persons with chronic physical disabilities.

Standard Features:

- Patented Twilight Tilt Technology
- Patented MaxiComfort[®] Positioning with Four-way Motion Seat
- Adjustable Headrest
- Adjustable Lumbar
- Programmable AutoDrive[™] Hand Control
- USB Charging Port
- Wireless Smartphone Charger
- Removable Table
- Removable LED Reading Light
- Built-in Drink Holder
- Extra Pocket
- SmartTek[®] Diagnostic System

Upgrade Option:



MAXICOMFORT® Series PR519

Model Number	PR519-SME	PR519-MLA
Size	Small/Med	Med/Large
Class II Medical Device	YES	YES
Weight Capacity	400 LBS	400 LBS
Positioning	Twilight	Twilight
Comfort Zone(s)	5	5
Twilight Technology	YES	YES
Chaise Seat	YES	YES
Pocketed Coil Seat	NO	NO
Back Type	Biscuit	Biscuit
Removable Back Type	Quick Release	Quick Release
Head Rest Cover	NO	NO
Arm Rest Covers	NO	NO
Overall Width	41"	40.5"
Overall Height	45"	47.5"
Seat Width	23"	23"
Floor to Top of Seat	19.5"	20.5"
Seat Depth	19"	21.5"
Seat to Top of Back	30"	32"
Seat to Top of Arm	8.5"	7"
Distance Required from Wall Reclined	20"	22"
Extension Reclined from Back of Seat to End of Foot Rest	43"	44"
Life Time Warranty, Chair Frame, Lift Frame, Recline Mechanism	YES	YES
Warranty on Electrical parts	3 YR	3 YR
Pro Rated Years 4 Thru 7	YES	YES
Warranty on Mechanical Labor	3 YR	3 YR
Warranty on Electrical Labor	1 YR	1 YR
Hand Control Routing	Inside Pocket	Inside Pocket
Extra Pocket Option	Standard	Standard
Heat & Massage Option	YES	YES
HeatWave Technology Option	YES	YES
Nirvana with HeatWave Option	NO	NO
Adjustable Headrest Option	Standard	Standard
Adjustable Lumbar Option	Standard	Standard
Foot Rest Extension Option	YES	YES
Straight Lift Option	YES	YES
USB Charging Port	Right Arm	Right Arm
Battery Backup	YES	YES
SmartTek Diagnostic System	Standard	Standard
Place of Origin	USA	USA



TWILIGHT

The World's Most Advanced
Power Positioning Lift Recliner
with Patented Twilight Technology!



Shown in Brisa® Night Navy

Healthy Benefits:

- Elevates Feet Above Heart
- Supports Natural 'S' Shape of Spine
- Alleviates Pressure On Lungs
- Available in Luxurious Brisa® Fabrics With Breathable Technology
- Distributes Weight
- Relieves Pressure Points
- Encourages Proper Posture

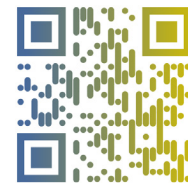
Comfort Zone™

by GOLDEN

Comfort Zones 1 - 5 This positioning system incorporates all five adjustable comfort zones to create the ultimate wellness comfort experience with our patented Twilight Technology. Each Comfort Zone can be adjusted independently by using the exclusive AutoDrive™ hand control.



WE PATENTED COMFORT™



Scan with your smartphone camera to learn more about Comfort Zone by Golden.



Phone: 800-624-6374
Fax: 800-628-5165
www.goldentech.com



Literature is current at time of printing. Golden Technologies reserves the right to make changes to the product or literature at any time.

Sizes may vary depending on fabric, filling material, upholstery and carpet thickness. All measurements taken on concrete floor using levels and metal rulers.



Complies with
UL 73 and
CSA C22.2 No. 68



www.facebook.com/goldentechnologies

LIT-SHT-PR519 Rev.C 042226